
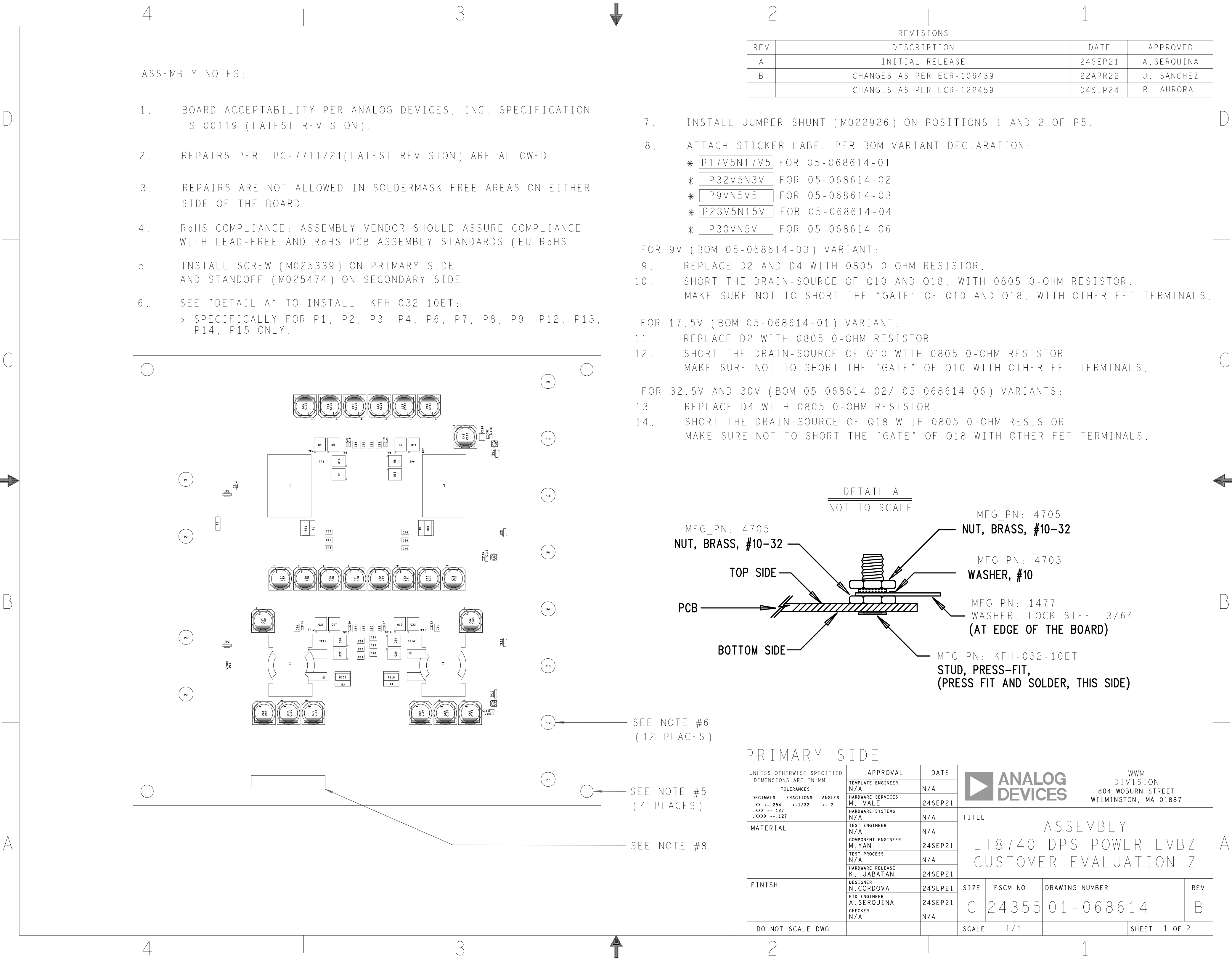


REVISIONS			
REV	DESCRIPTION	DATE	APPROVED
A	INITIAL RELEASE	24SEP21	A.SERQUINA
B	CHANGES AS PER ECR-106439	22APR22	J. SANCHEZ
	CHANGES AS PER ECR-122459	04SEP24	R. AURORA

HOLE TOLERANCE
UNLESS SPECIFIED
PLATED: +/-0.076MM
NON PLATED: +/-0.050MM

DRILL CHART: TOP to BOTTOM				
FINISHED HOLES IN MILLIMETERS				
FIGURE	SIZE	PLATED	QTY	TOLERANCE/NOTES
.	0.254	PLATED	222	DIA MAX
•	0.508	PLATED	1258	DIA MAX
◦	0.762	PLATED	12	
◦	0.889	PLATED	3	
△	4.851	PLATED	12	
A	3.175	NON-PLATED	4	

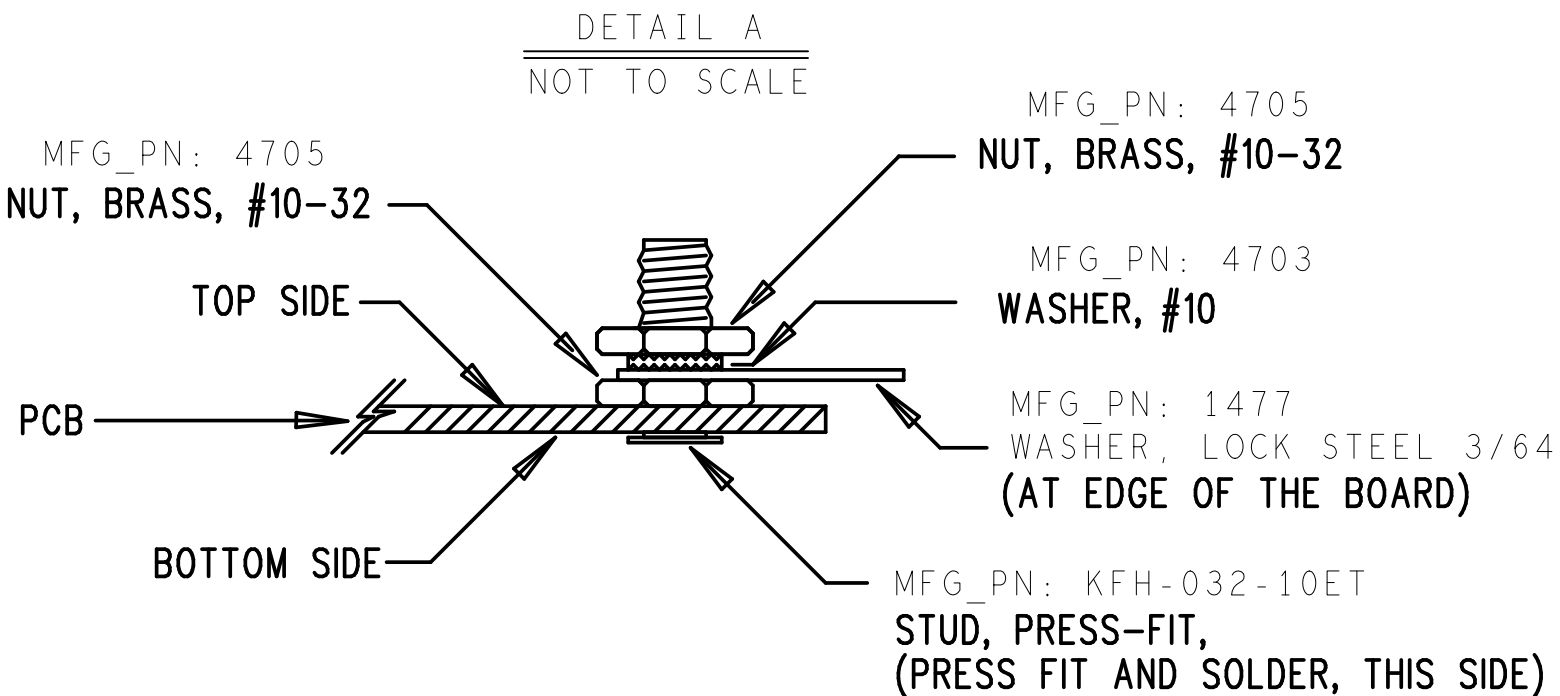
PRIMARY SIDE				
UNLESS OTHERWISE SPECIFIED DIMENSIONS ARE IN MM TOLERANCES DECIMALS FRACTIONS ANGLES .XX --.254 --1/32 -- 2 .XXX --.127 .XXXX --.127	APPROVAL	DATE	 WWM DIVISION 804 WOBURN STREET WILMINGTON, MA 01887	
	TEMPLATE ENGINEER N/A	N/A		
	HARDWARE SERVICES M. VALE	24SEP21		
	HARDWARE SYSTEMS N/A	N/A		
MATERIAL	TEST ENGINEER N/A	N/A	TITLE FABRICATION LT8740 DPS POWER EVBZ CUSTOMER EVALUATION Z	
	COMPONENT ENGINEER M. YAN	24SEP21		
	TEST PROCESS N/A	N/A		
	HARDWARE RELEASE K. JABATAN	24SEP21		
FINISH	DESIGNER N. CORDOVA	24SEP21	SIZE	FSCM NO
	PTD ENGINEER A. SERQUINA	24SEP21	C	24355
	CHECKER N/A	N/A	DRAWING NUMBER	09-068614
			REV	B
DO NOT SCALE DWG			SCALE	1 / 1
			SHEET	1 OF 2



ASSEMBLY NOTES:

1. BOARD ACCEPTABILITY PER ANALOG DEVICES, INC. SPECIFICATION TST00119 (LATEST REVISION).
2. REPAIRS PER IPC-7711/21(LATEST REVISION) ARE ALLOWED.
3. REPAIRS ARE NOT ALLOWED IN SOLDERMASK FREE AREAS ON EITHER SIDE OF THE BOARD.
4. RoHS COMPLIANCE: ASSEMBLY VENDOR SHOULD ASSURE COMPLIANCE WITH LEAD-FREE AND RoHS PCB ASSEMBLY STANDARDS (EU RoHS
5. INSTALL SCREW (M025339) ON PRIMARY SIDE AND STANDOFF (M025474) ON SECONDARY SIDE
6. SEE "DETAIL A" TO INSTALL KFH-032-10ET:
> SPECIFICALLY FOR P1, P2, P3, P4, P6, P7, P8, P9, P12, P13, P14, P15 ONLY.

7. INSTALL JUMPER SHUNT (M022926) ON POSITIONS 1 AND 2 OF P5.
8. ATTACH STICKER LABEL PER BOM VARIANT DECLARATION:
* P17V5N17V5 FOR 05-068614-01
* P32V5N3V FOR 05-068614-02
* P9VN5V5 FOR 05-068614-03
* P23V5N15V FOR 05-068614-04
* P30VN5V FOR 05-068614-06
FOR 9V (BOM 05-068614-03) VARIANT:
9. REPLACE D2 AND D4 WITH 0805 0-OHM RESISTOR.
10. SHORT THE DRAIN-SOURCE OF Q10 AND Q18, WITH 0805 0-OHM RESISTOR.
MAKE SURE NOT TO SHORT THE "GATE" OF Q10 AND Q18, WITH OTHER FET TERMINALS.
FOR 17.5V (BOM 05-068614-01) VARIANT:
11. REPLACE D2 WITH 0805 0-OHM RESISTOR.
12. SHORT THE DRAIN-SOURCE OF Q10 WITH 0805 0-OHM RESISTOR
MAKE SURE NOT TO SHORT THE "GATE" OF Q10 WITH OTHER FET TERMINALS.
FOR 32.5V AND 30V (BOM 05-068614-02/ 05-068614-06) VARIANTS:
13. REPLACE D4 WITH 0805 0-OHM RESISTOR.
14. SHORT THE DRAIN-SOURCE OF Q18 WITH 0805 0-OHM RESISTOR
MAKE SURE NOT TO SHORT THE "GATE" OF Q18 WITH OTHER FET TERMINALS.



SEE NOTE #6
(12 PLACES)

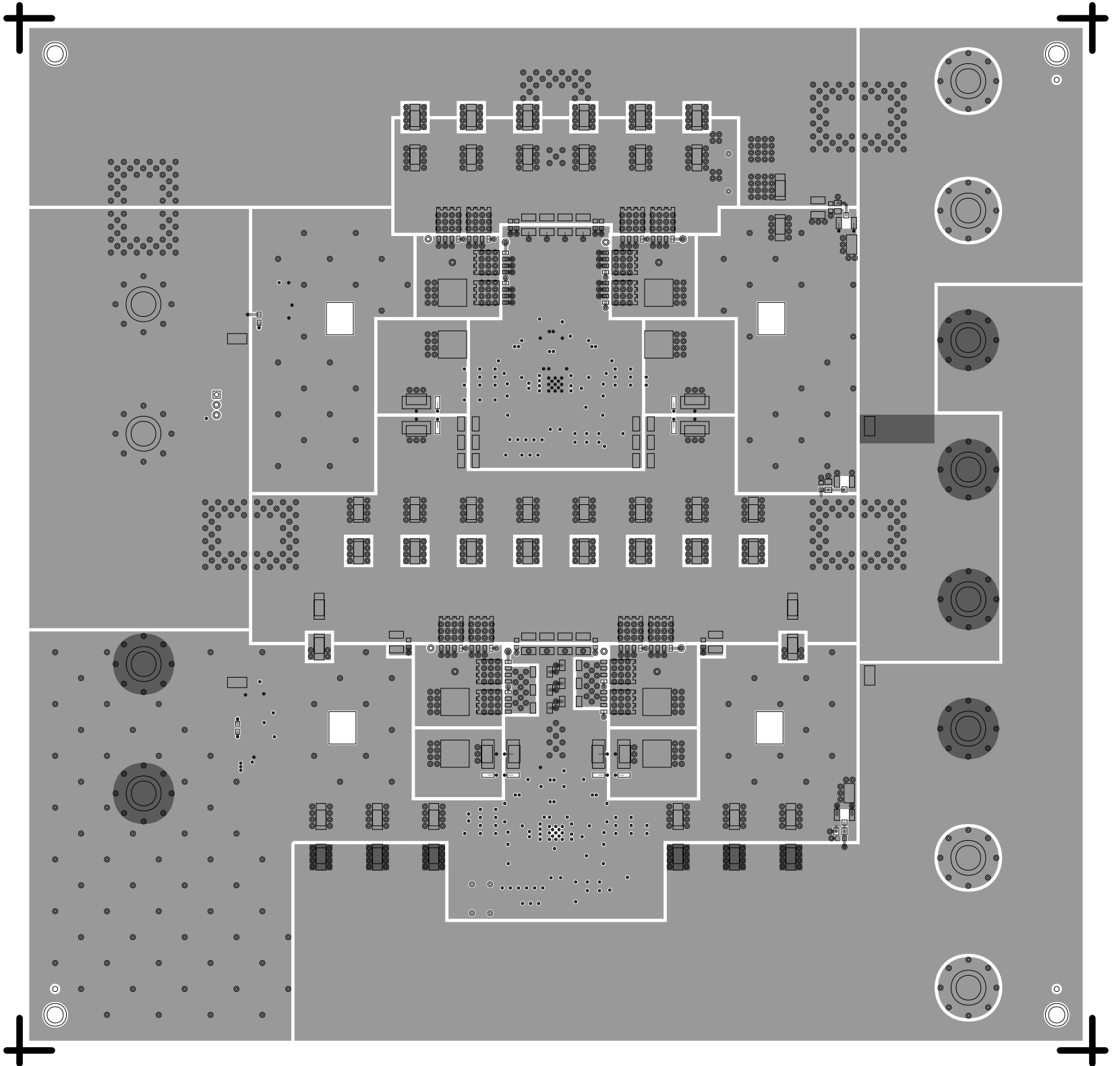
SEE NOTE #5
(4 PLACES)

SEE NOTE #8

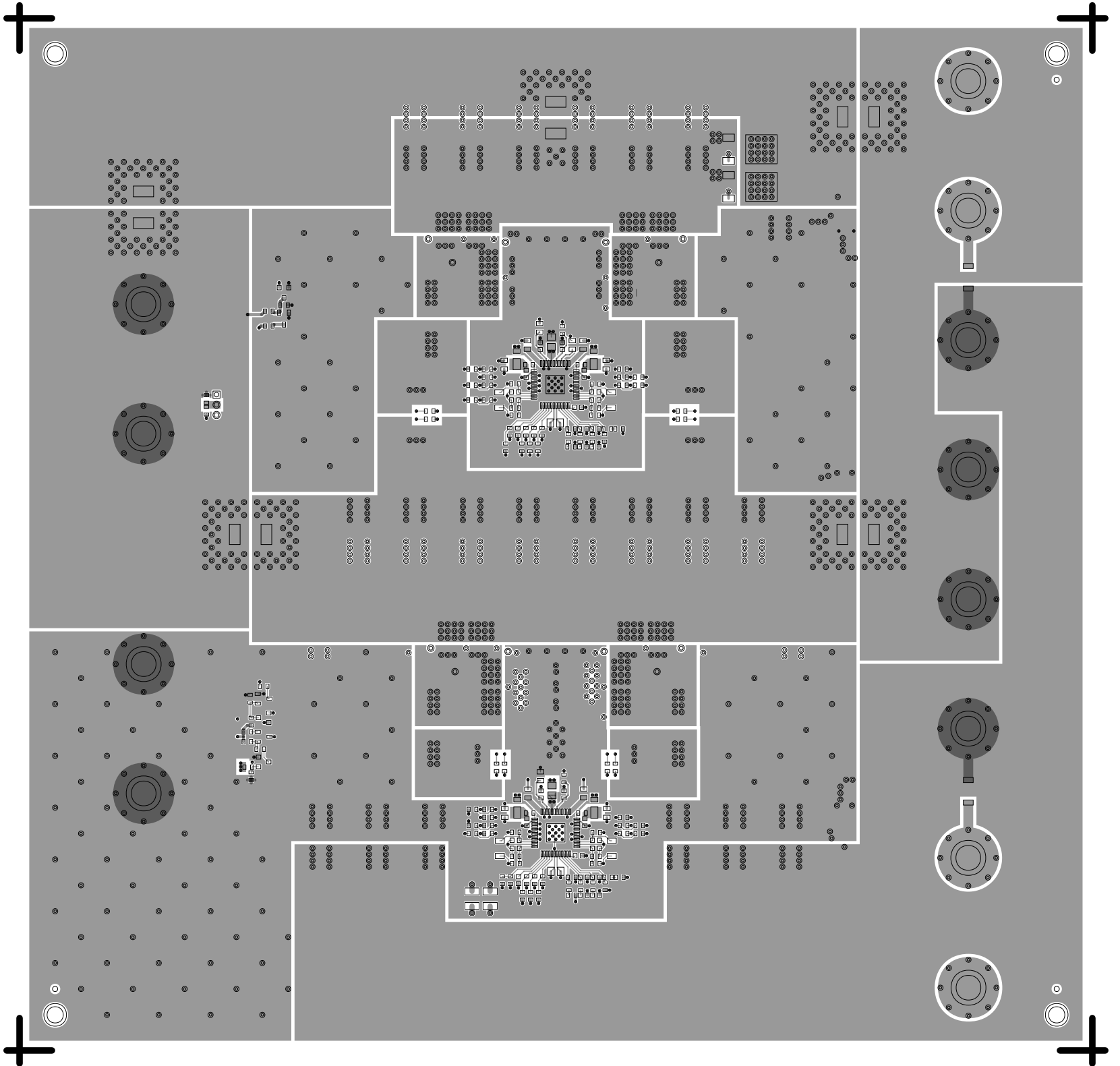
PRIMARY SIDE

UNLESS OTHERWISE SPECIFIED DIMENSIONS ARE IN MM			APPROVAL		DATE		<div><div></div><div>ANALOG DEVICES</div></div> <div>WWM DIVISION 804 WOBURN STREET WILMINGTON, MA 01887</div>											
TOLERANCES			TEMPLATE ENGINEER N/A		N/A													
DECIMALS	FRACTIONS	ANGLES	HARDWARE SERVICES M. VALE		24SEP21		TITLE ASSEMBLY LT8740 DPS POWER EVBZ CUSTOMER EVALUATION Z											
.XX	--.254	--1/32	HARDWARE SYSTEMS N/A		N/A													
.XXX	--.127	--.2	TEST ENGINEER N/A		N/A													
.XXXX	--.127		COMPONENT ENGINEER M. YAN		24SEP21													
MATERIAL			TEST PROCESS N/A		N/A		SIZE			FSCM NO			DRAWING NUMBER			REV		
			HARDWARE RELEASE K. JABATAN		24SEP21													
			DESIGNER N. CORDOVA		24SEP21													
FINISH			PTD ENGINEER A. SERQUINA		24SEP21		C			24355			01 - 068614			B		
			CHECKER N/A		N/A													
DO NOT SCALE DWG							SCALE			1 / 1						SHEET 1 OF 2		

L1 PRIMARY
08-068614-01
REV B



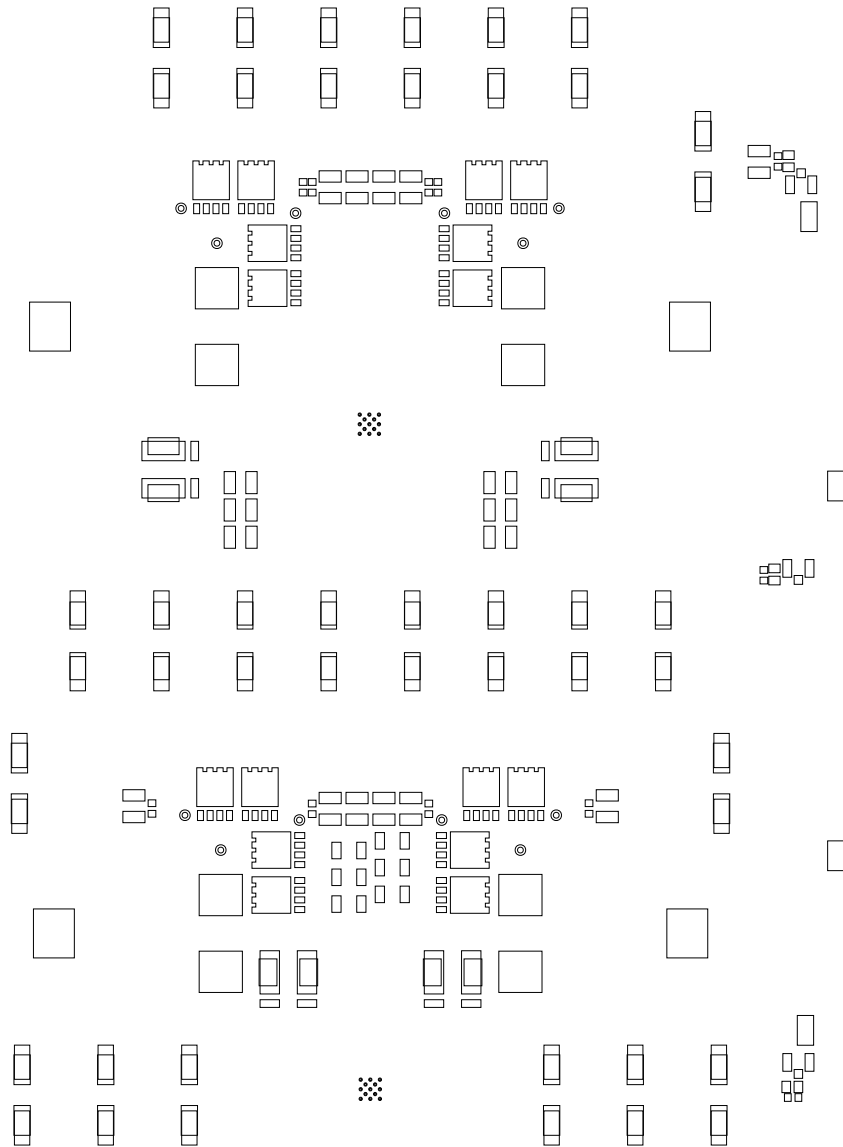
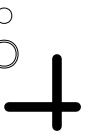
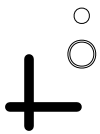
L6 SECONDARY
08-068614-02
REV B



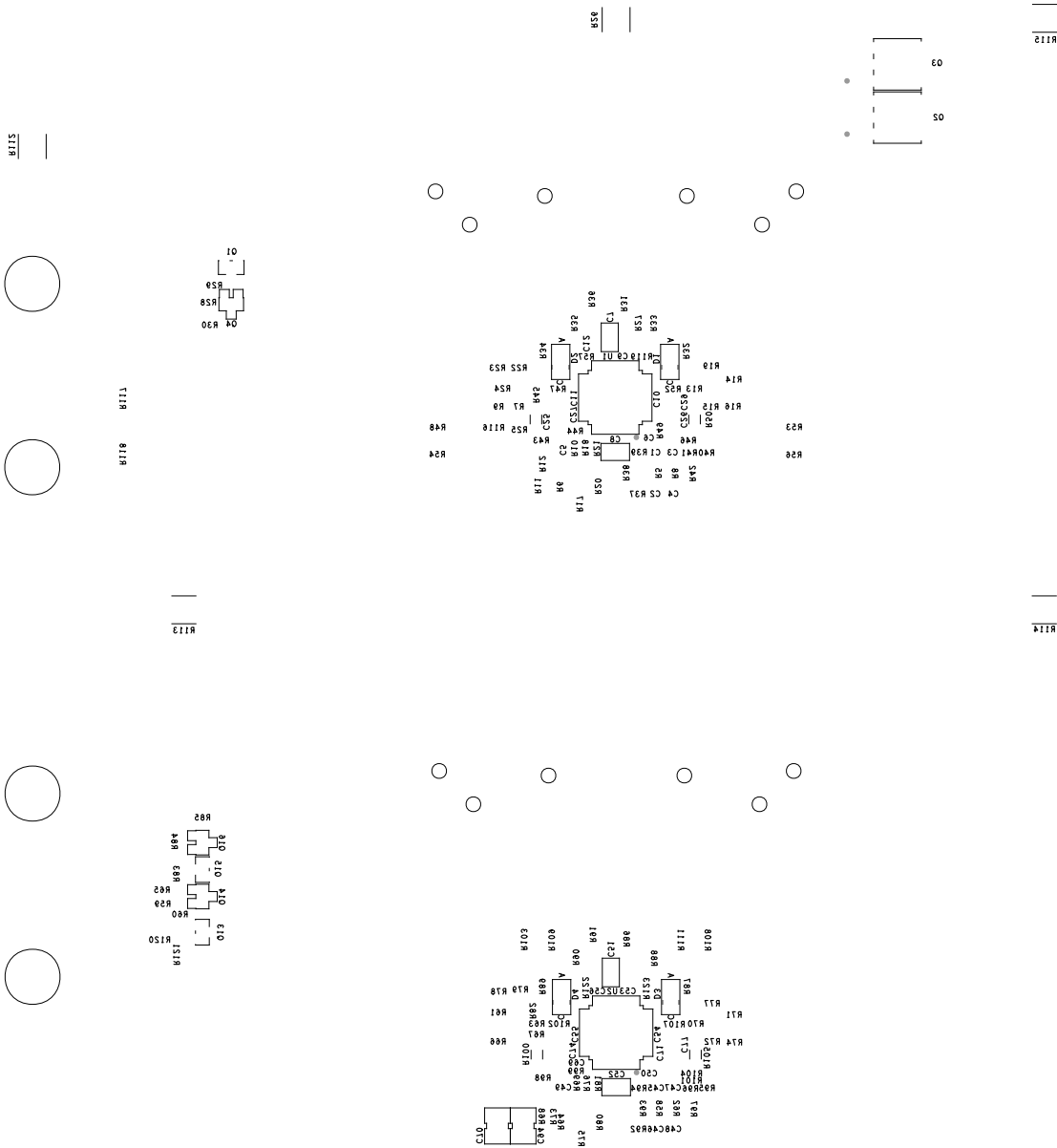
SOLDERMASK PRIMARY

08-068614-04

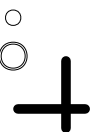
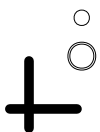
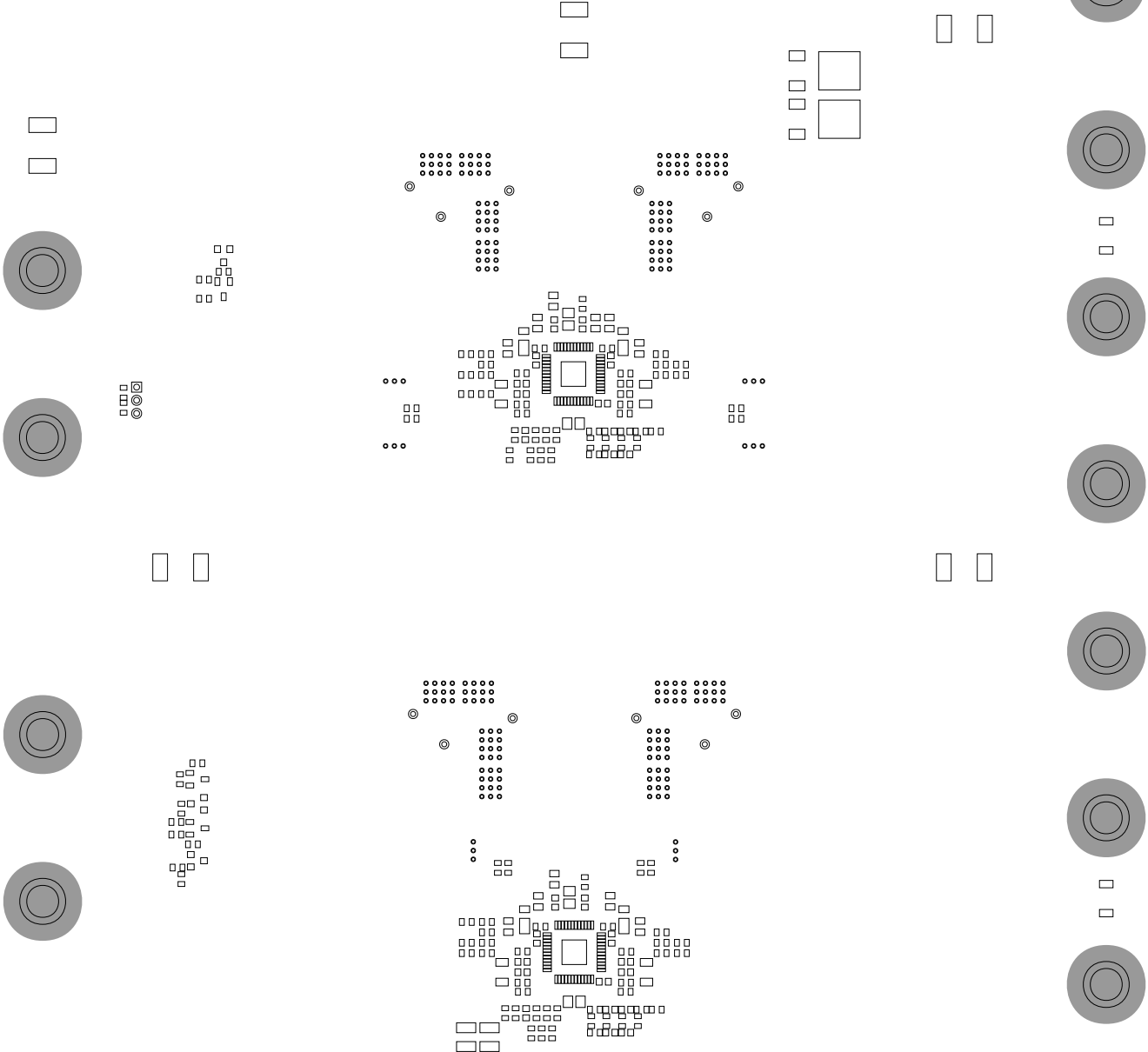
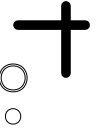
REV B



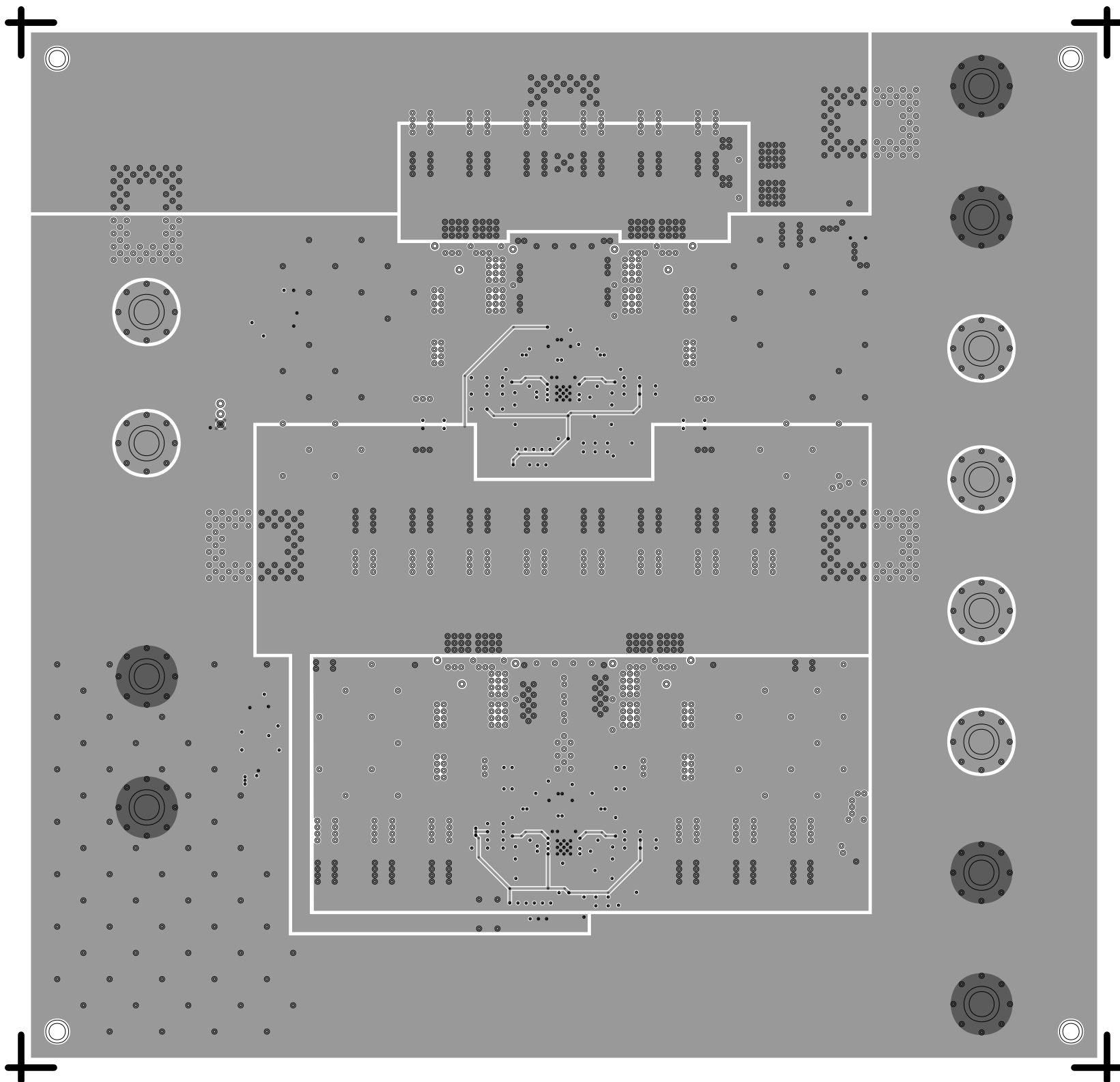
SILKSCREEN SECONDARY
08-068614-05
REV B



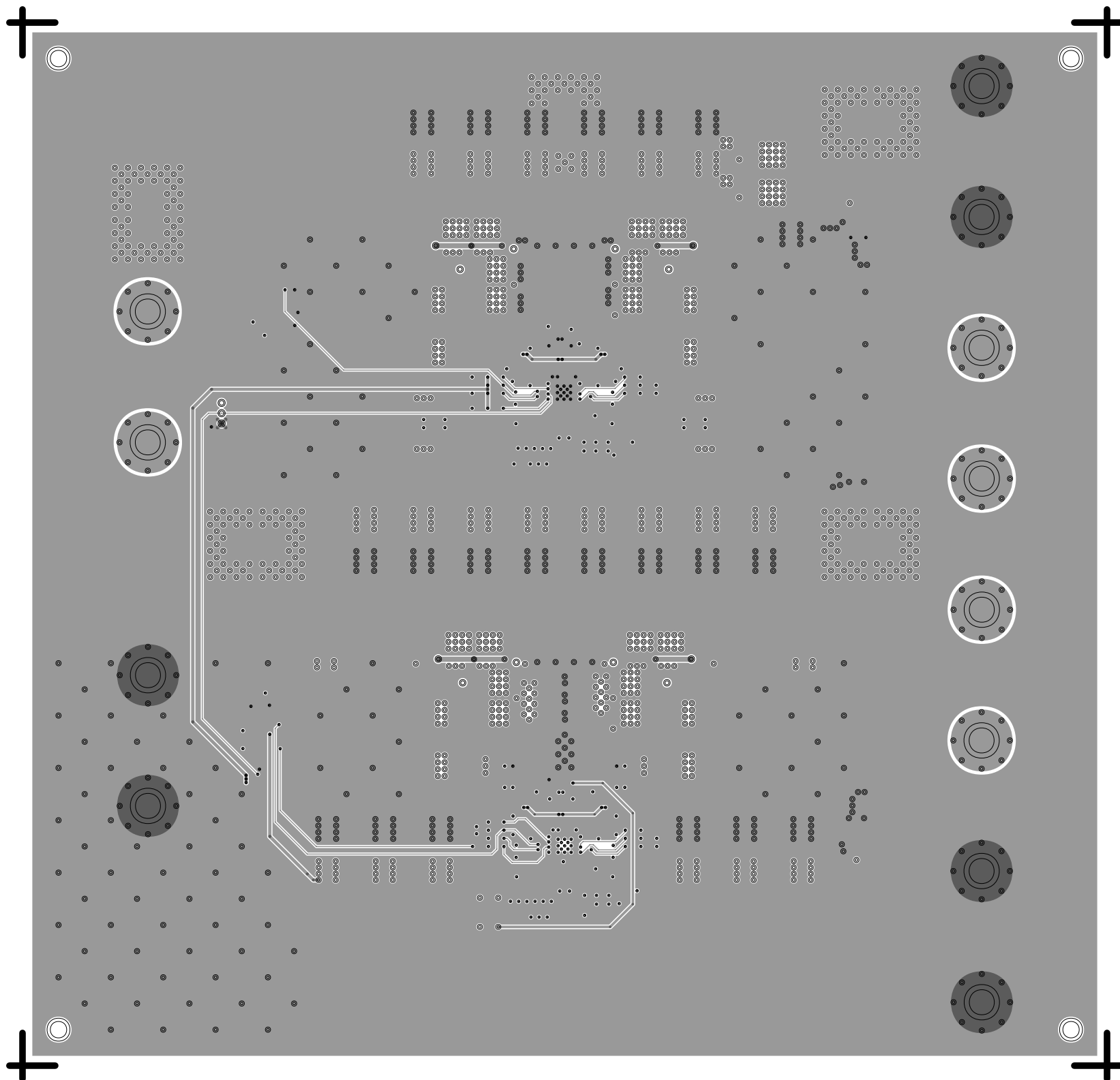
SOLDERMASK SECONDARY
08-068614-06
REV B



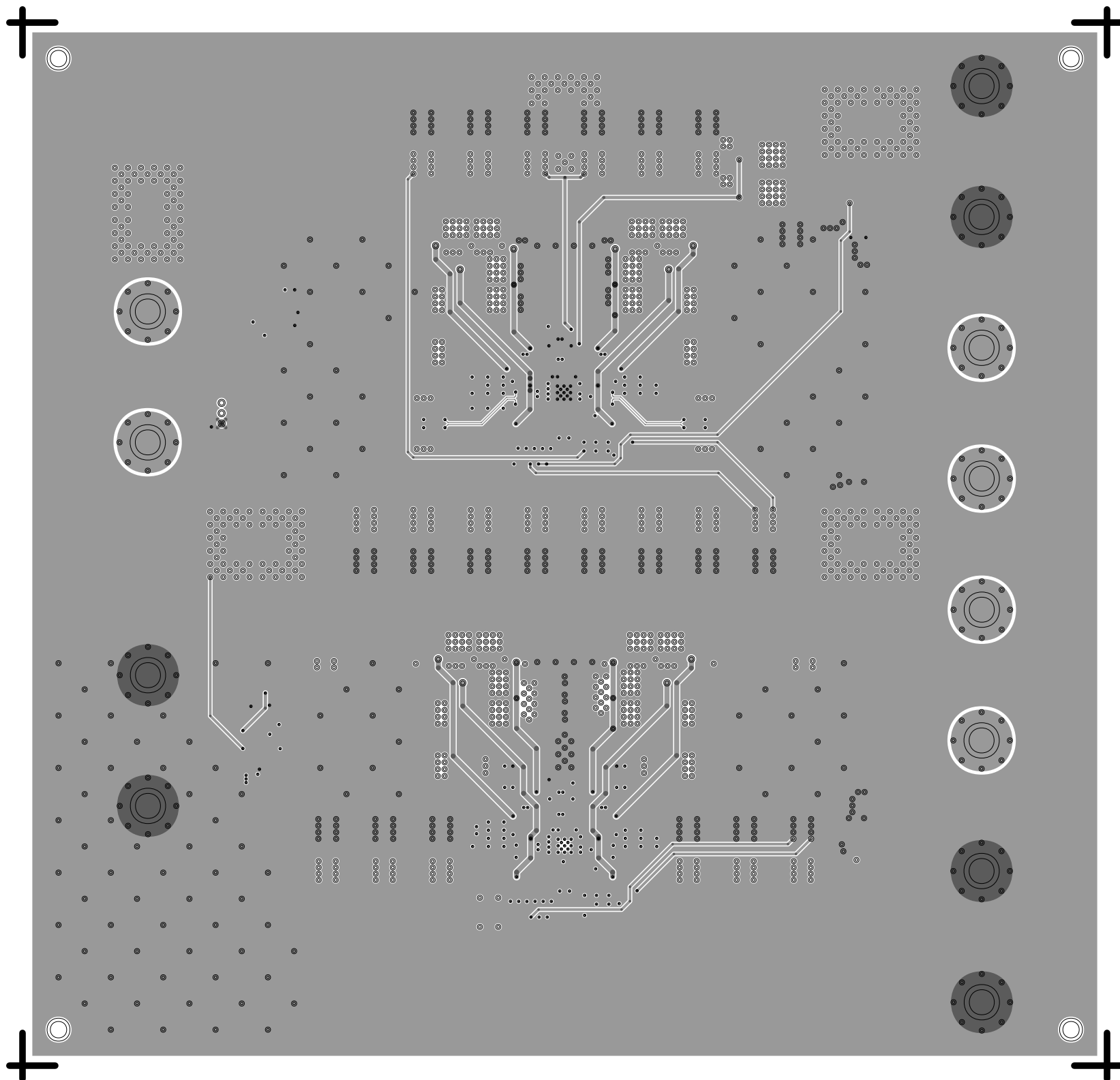
L2 PWR
08-068614-07
REV B



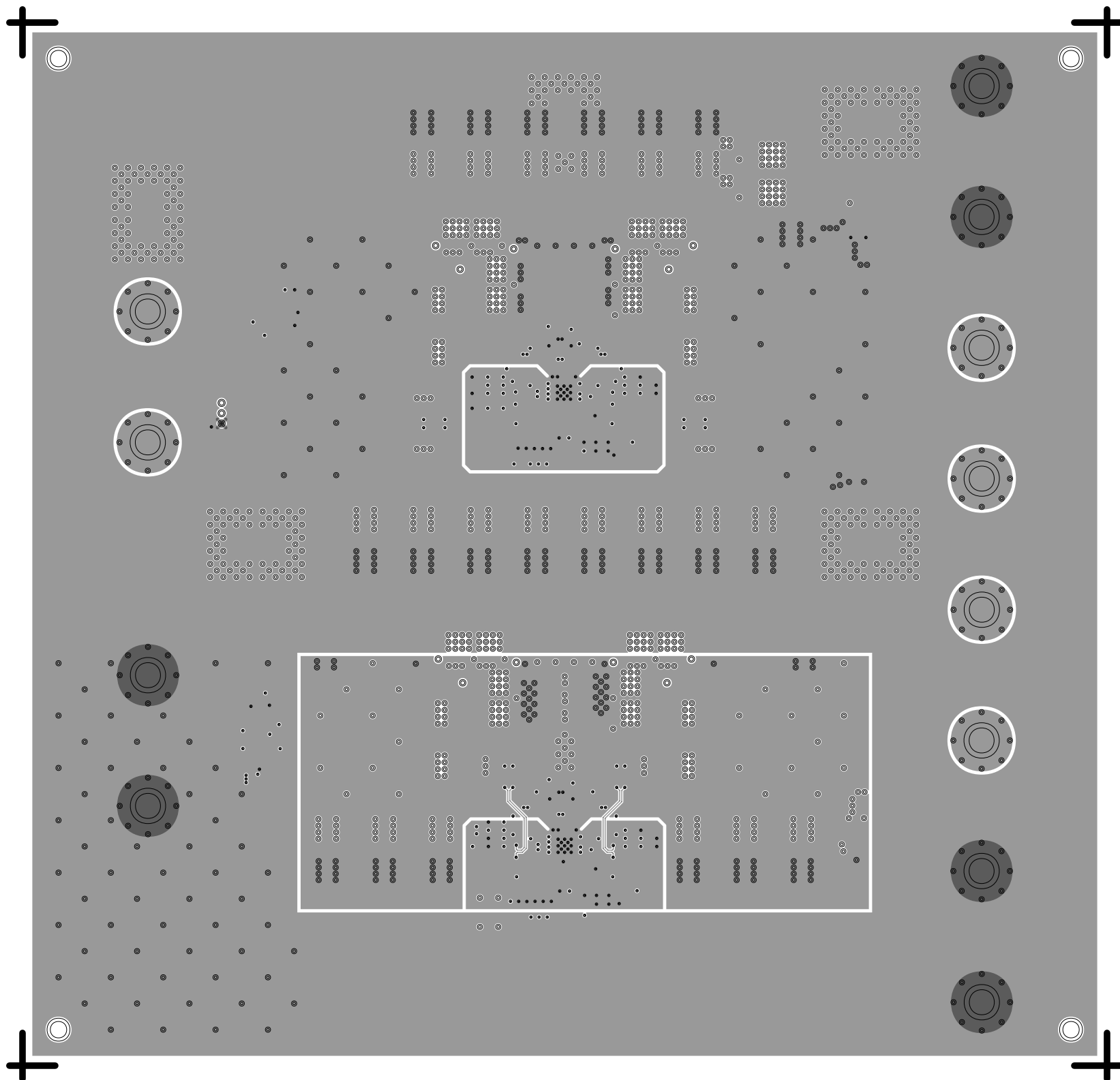
L3 SIG
08-068614-08
REV B



L4 SIG
08-068614-09
REV B



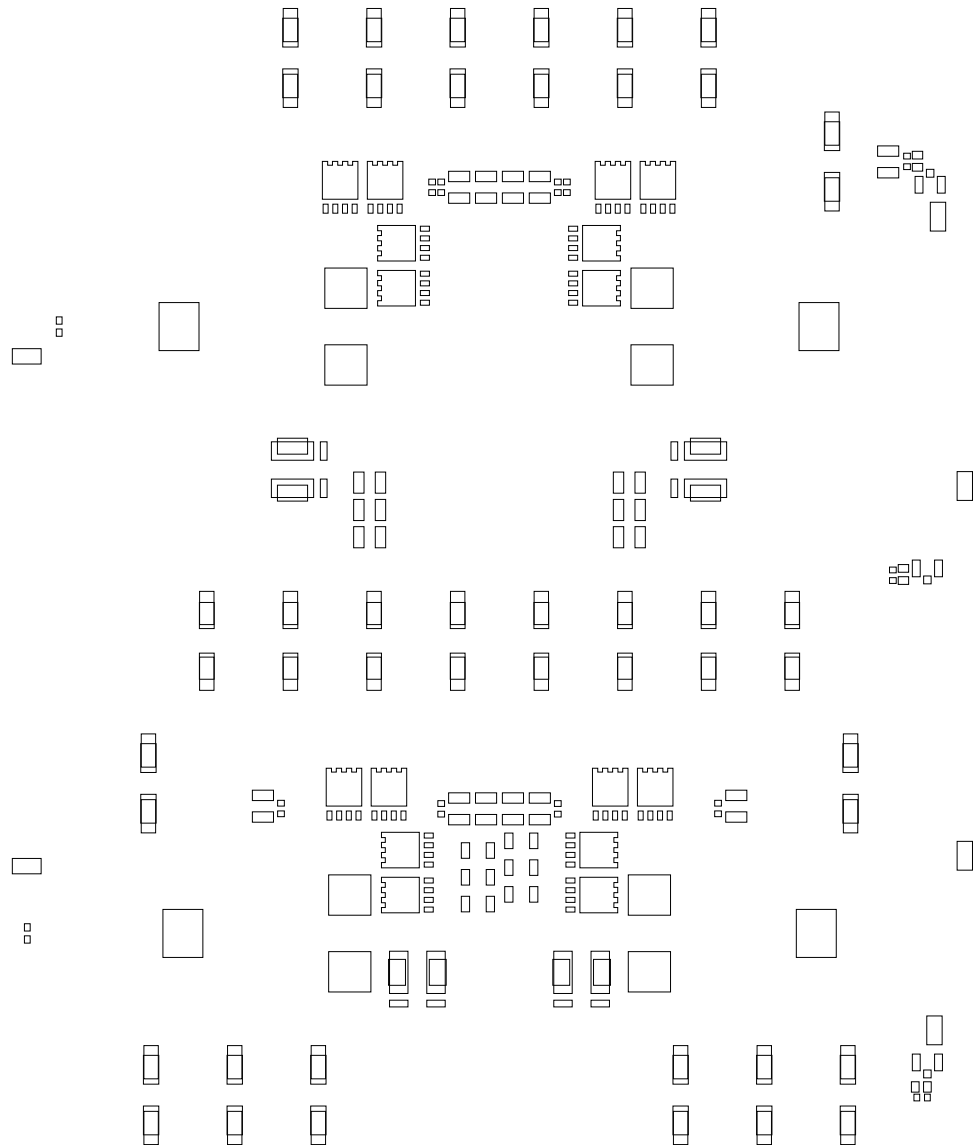
L5 GND
08-068614-10
REV B



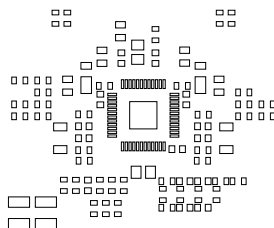
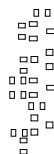
PASTEMASK PRIMARY

08-068614-11

REV B



PASTEMASK SECONDARY
08-068614-12
REV B





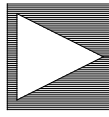
SPECIFICATIONS:

- ROHS COMPLIANCE NOTE: HOMOGENOUS MATERIALS IN THIS BOARD SHALL BE COMPLIANT THE EU RoHS DIRECTIVE 2002/95/EC
- MATERIALS: ALL LAMINATES AND BONDING MATERIALS SHOULD BE SELECTED FROM IPC-4101 OR IPC-4103, MINIMUM Tg>170degC, Td>300degC, U.L. RATING OF 94 V-0
- MATERIAL FAMILY: ISOLA370HR OR S1000-2 OR IT180 OR EQUIVALENT
- CLADDING: EXTERNAL LAYERS .5 OZ. COPPER, OVERPLATE TO 2 OZ. INTERNAL SIGNAL LAYERS .5 OZ. COPPER. INTERNAL PLANE LAYERS 1 OZ. COPPER.
- NOTE: IF THE LAYER STACKUP CONFLICTS WITH THE ABOVE CLADDING SPECIFICATIONS THEN THE LAYER STACKUP SHALL TAKE PRECEDENCE.
- SOLDER MASK: SHALL BE LIQUID PHOTOIMAGEABLE (LPI) APPLIED ON BOTH SIDES OVER BARE COPPER OR GOLD AND SHALL MEET IPC-SM-840 (LATEST REV.) CLASS 3. COLOR GREEN.
- SILK SCREEN: SHALL BE PERMANENT NON-CONDUCTIVE EPOXY INK, COLOR: WHITE SYNTHETIC INKJET PRINTING ALLOWED FOR DENSE BOARDS, COLOR: WHITE
- SURFACE FINISH: ENIG (ELECTROLESS NICKEL/IMMERSION GOLD) PER IPC-4552 LATEST REVISION
- INTENTIONAL SHORTS: IF SUPPLIED DATA INCLUDES A FILE "READ_ME.2", THEN INTENTIONAL NET SHORTS EXIST. CUSTOMER REVIEW AND APPROVAL IS REQUIRED IF SUPPLIED DATA REPORTS ANY CONDITION THAT DOES NOT MATCH "READ_ME.2" FILE PROVIDED.
- TEST REQUIREMENTS: 100% NETLIST ELECTRICAL VERIFICATION USING CUSTOMER SUPPLIED IPC-D-356 NETLIST FOR OPENS AND SHORTS WHEN "GERBER DATA" IS PROVIDED. THIS VERIFICATION ALSO REQUIRED FOR "ODB++" DATA PER EMBEDDED NETLIST.

REQUIREMENTS:

- REFER TO IPC-6010 SERIES (LATEST REV.), CLASS 2 FOR FABRICATION UNLESS OTHERWISE SPECIFIED.
- ACCEPTABILITY PER ANALOG DEVICES, INC. SPECIFICATION TST00115, (LATEST REVISION.)
- MODIFICATIONS TO THE ARTWORK ARE NOT ALLOWED WITHOUT WRITTEN AUTHORIZATION.
- HOLE PATTERN TOLERANCES FOR UNDIMENSIONED HOLES SHALL BE A DIAMETER OF 0.127 MM FROM THEIR TRUE POSITION.
- PLATED HOLE WALL THICKNESS SHALL NOT BE LESS THAN 0.0254MM MINIMUM AVERAGE, WITH NO READING LESS THAN .02032MM BY CROSS SECTION.
- HOLE DIAMETERS APPLY AFTER PLATING.
- FINISHED CONDUCTOR WIDTHS SHALL NOT BE REDUCED FROM THE NOMINAL INDICATED ON THE MASTER PATTERN, BY MORE THAN THE CONDUCTOR THICKNESS.
- MINIMUM DESIGN LINE WIDTH IS .200 MM.
- MINIMUM DESIGN SPACING IS .203 MM.
- NON-FUNCTIONAL PAD REMOVAL FROM INNER SIGNAL LAYERS MAY BE PERFORMED AFTER CUSTOMER APPROVAL.
- IF PAD SIZES PROVIDED ARE NOT LARGE ENOUGH TO MAINTAIN ANNULAR RING REQUIREMENT, MFR. MAY REQUEST APPROVAL TO TEAR DROP PADS TO MAINTAIN ANNULAR RING. (AT PAD TO TRACE INTERSECTION ONLY AND ELECTRICAL INTEGRITY MUST BE MAINTAINED.)
- THIEVING MAY BE ADDED TO COMPENSATE FOR LOW COPPER DENSITY AREAS ON THIS DESIGN ONLY AFTER REVIEW AND APPROVAL FROM THE CUSTOMER:
 - A. THIEVING TO CARD EDGE, FIDUCIALS, NON-PLATED THROUGH HOLES, ALL OTHER FEATURES TO BE 5.080 MM MINIMUM.
 - B. THERE SHALL BE NO THIEVING IN ANY AREAS FREE OF SOLDER MASK OR INTERNAL COPPER PLANES.
- MFR. TO LEGIBLY ETCH OR STAMP/SCREEN WITH PERMANENT NON-CONDUCTIVE INK ON SECONDARY SIDE IN A CLEAR AREA UNLESS OTHERWISE INDICATED:
 - A. U.L. CODE-FLAMMABILITY RATING
 - B. DATE CODE (STAMP).
 - C. LOT NUMBER
 - D. MFR LOGO
 - E. SUCCESSFUL ELECTRICAL TEST.
- REPAIRS PER IPC-7711/21 (LATEST REV.) ARE ALLOWED. ~~REPAIRS ARE NOT ALLOWED IN ANY AREA DEFINED ON GOLD_PRM AND/OR GOLD_SEC ARTWORK LAYERS WHEN PROVIDED IN GERBER OR ODB++ DATA.~~

FABRICATION

ANALOG
DEVICES

WWM
DIVISION
804 WOBURN STREET
WILMINGTON, MA 01887

SIZE	FSCM NO	DRAWING NUMBER	REV
C	24355	09-068614	B
SCALE	1/1	SHEET 2 OF 2	